

17-2666

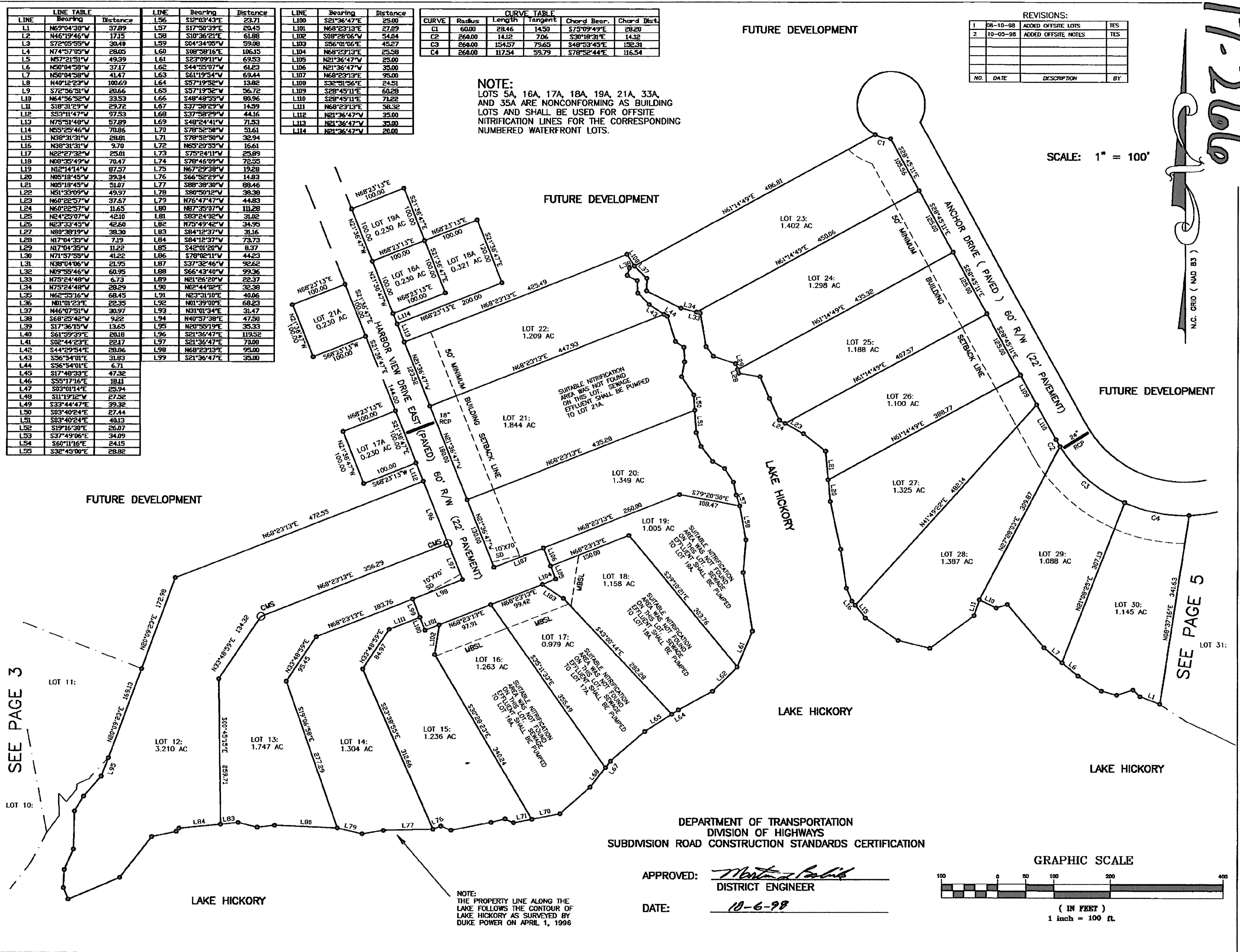
LINE	Bearing	Distance	LINE	Bearing	Distance
L1	N69°04'38"W	37.89	L56	S12°03'43"E	23.71
L2	N46°19'46"W	17.15	L57	S17°50'39"E	20.45
L3	S72°05'55"W	30.49	L58	S10°36'21"E	61.88
L4	N74°57'05"W	28.05	L59	S04°34'05"W	59.08
L5	N57°21'51"W	49.39	L60	S08°58'16"E	106.35
L6	N50°04'58"W	37.17	L61	S23°09'11"W	69.53
L7	N50°04'58"W	41.47	L62	S44°55'07"W	61.23
L8	N40°12'23"W	100.69	L63	S61°19'54"W	69.44
L9	S72°36'31"W	20.66	L64	S57°19'32"W	13.82
L10	N64°56'52"W	33.53	L65	S57°19'32"W	56.72
L11	S18°31'29"W	29.72	L66	S48°48'33"W	80.96
L12	S53°11'47"W	97.53	L67	S37°38'29"W	14.59
L13	N75°51'48"W	57.89	L68	S37°58'29"W	44.16
L14	N55°25'46"W	70.86	L69	S48°24'41"W	71.53
L15	N38°31'31"W	28.81	L70	S78°52'58"W	51.61
L16	N38°31'31"W	9.70	L71	S78°52'58"W	32.94
L17	N22°27'32"W	25.01	L72	N65°20'33"W	16.61
L18	N08°35'49"W	70.47	L73	S75°24'11"W	25.89
L19	N12°14'14"W	87.57	L74	S78°46'09"W	72.55
L20	N05°18'45"W	39.34	L75	N67°29'38"W	19.28
L21	N05°18'45"W	51.07	L76	S66°52'29"W	14.83
L22	N51°33'09"W	49.37	L77	S88°38'30"W	88.46
L23	N60°22'57"W	37.67	L78	S80°50'12"W	38.38
L24	N60°22'57"W	11.65	L79	N76°47'47"W	44.83
L25	N24°25'07"W	42.10	L80	N67°25'07"W	11.28
L26	N23°33'45"W	42.60	L81	S83°24'02"W	31.02
L27	N80°38'19"W	38.30	L82	N75°49'42"W	34.95
L28	N17°04'32"W	7.19	L83	S84°12'37"W	31.16
L29	N17°04'32"W	11.22	L84	S84°12'37"W	73.73
L30	N71°57'55"W	41.22	L85	S42°01'20"W	8.37
L31	N38°04'06"W	21.95	L86	S78°02'11"W	44.23
L32	N09°55'46"W	60.95	L87	S37°32'46"W	92.62
L33	N75°24'48"W	6.73	L88	S66°43'40"W	99.36
L34	N75°24'48"W	28.29	L89	N21°26'20"W	22.37
L35	N62°53'16"W	68.45	L90	N02°44'02"E	32.38
L36	N01°01'23"E	22.35	L91	N23°31'10"E	40.06
L37	N46°07'51"W	30.97	L92	N01°39'00"E	68.23
L38	S68°25'42"W	9.22	L93	N31°01'34"E	31.47
L39	S17°36'15"W	13.65	L94	N40°57'38"E	47.50
L40	S61°59'39"E	20.18	L95	N20°55'19"E	35.33
L41	S02°44'23"E	22.17	L96	S21°36'47"E	119.52
L42	S44°29'54"E	28.06	L97	S21°36'47"E	70.00
L43	S56°34'01"E	31.83	L98	N68°23'13"E	95.00
L44	S56°54'01"E	6.71	L99	S21°36'47"E	35.00
L45	S17°48'33"E	47.32			
L46	S55°17'16"E	18.11			
L47	S03°01'14"E	25.94			
L48	S11°19'12"W	27.32			
L49	S33°44'47"E	39.32			
L50	S03°40'24"E	27.44			
L51	S03°40'24"E	40.13			
L52	S19°16'30"E	26.07			
L53	S37°49'06"E	34.09			
L54	S60°11'16"E	24.15			
L55	S32°45'00"E	28.82			

CURVE TABLE					
CURVE	Radius	Length	Tangent	Chord Bear.	Chord Dist.
C1	60.00	28.46	14.50	S75°09'49"E	28.20
C2	260.00	14.12	7.06	S30°18'31"E	14.12
C3	260.00	154.57	79.65	S48°53'45"E	192.31
C4	260.00	117.54	59.79	S78°52'44"E	116.54

NOTE:  
 LOTS 5A, 16A, 17A, 18A, 19A, 21A, 33A,  
 AND 35A ARE NONCONFORMING AS BUILDING  
 LOTS AND SHALL BE USED FOR OFFSITE  
 NITRIFICATION LINES FOR THE CORRESPONDING  
 NUMBERED WATERFRONT LOTS.

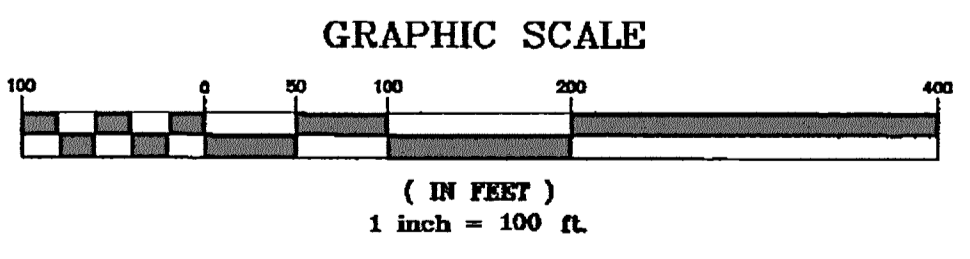
REVISIONS:			
NO.	DATE	DESCRIPTION	BY
1	08-10-98	ADDED OFFSITE LOTS	YES
2	10-05-98	ADDED OFFSITE NOTES	YES

SCALE: 1" = 100'



DEPARTMENT OF TRANSPORTATION  
 DIVISION OF HIGHWAYS  
 SUBMISSION ROAD CONSTRUCTION STANDARDS CERTIFICATION

APPROVED: *Maria Padilla*  
 DISTRICT ENGINEER  
 DATE: 10-6-98



SEE PAGE 5

SEE PAGE 3