

9 2:41 P.M.

Line	Bearing	Distance
L1	S04°11'19"E	19.62
L2	S00°45'58"W	144.91
L3	S23°49'00"W	22.15
L4	S54°55'44"W	17.26
L5	S81°51'58"E	15.08
L6	S48°51'31"E	15.10
L7	S25°45'35"E	26.77
L8	S18°28'18"E	93.47
L9	S04°53'48"E	30.75
L10	S28°21'33"W	87.09
L11	S28°21'33"W	35.46
L12	S51°41'22"W	42.83
L13	S15°52'32"W	78.63
L14	S42°14'41"W	43.19
L15	S12°32'02"E	32.84
L16	S35°17'58"E	45.54
L17	S28°52'14"E	47.19
L18	S11°43'37"E	30.30
L19	S17°16'48"W	13.83
L20	S17°16'48"W	25.12
L21	S38°28'53"W	48.70
L22	S77°31'50"W	12.42
L23	S85°28'34"W	57.19
L24	S81°47'10"W	49.91
L25	S59°08'13"W	37.55
L26	S59°06'13"W	36.58
L27	S57°04'53"W	60.04
L28	S85°55'20"W	76.07

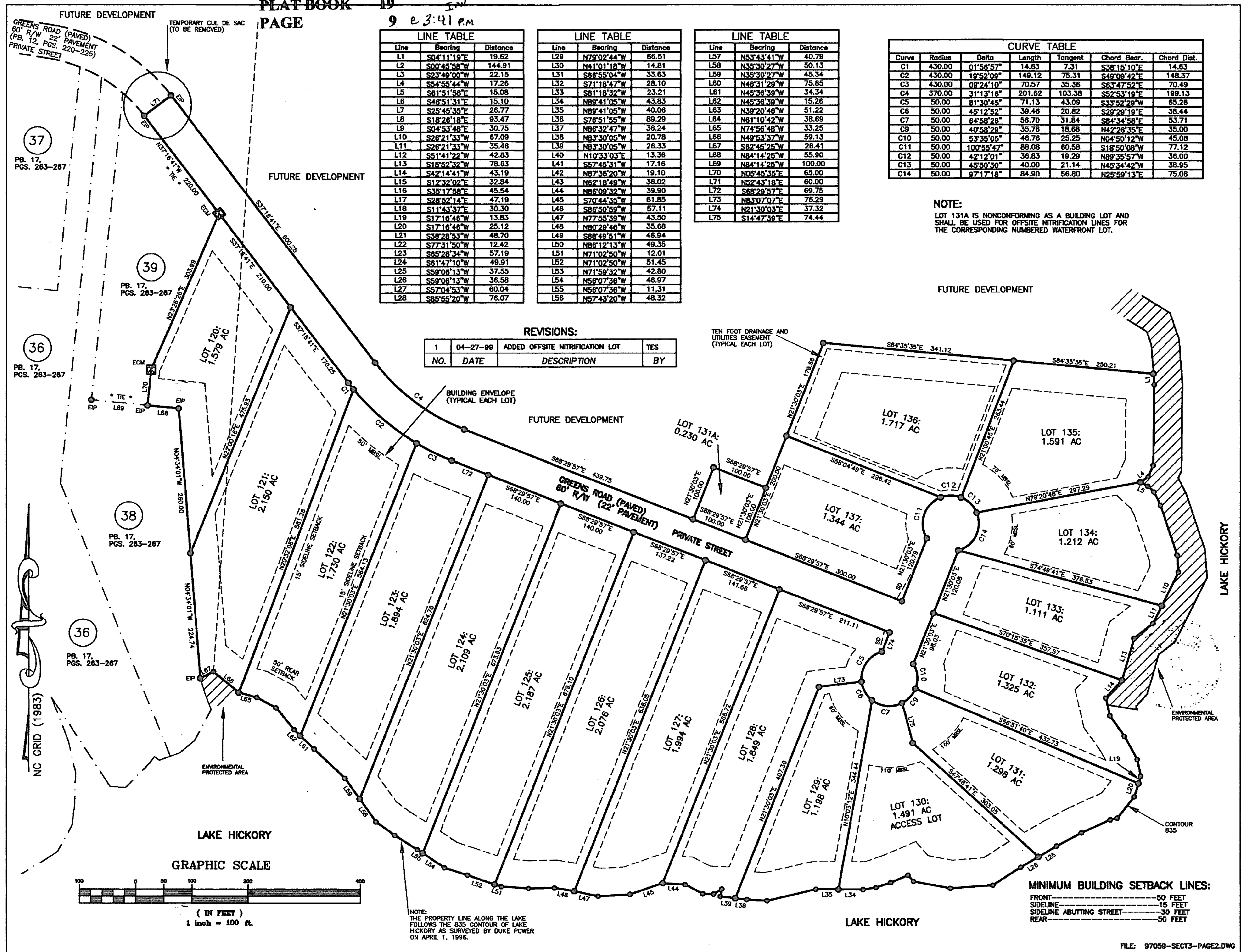
Line	Bearing	Distance
L29	N79°02'44"W	66.51
L30	N41°01'18"W	14.81
L31	S88°55'04"W	33.63
L32	S71°18'47"W	28.10
L33	S81°18'32"W	23.21
L34	N88°41'05"W	43.83
L35	N89°41'05"W	40.06
L36	S76°51'55"W	89.29
L37	N86°32'47"W	36.24
L38	N83°30'05"W	20.78
L39	N83°30'05"W	26.33
L40	N10°33'03"E	13.36
L41	S57°45'31"W	17.16
L42	N87°36'20"W	19.10
L43	N62°18'49"W	36.02
L44	N86°09'32"W	39.90
L45	S70°44'35"W	61.85
L46	S86°50'59"W	57.11
L47	N77°55'39"W	43.50
L48	N80°28'46"W	35.68
L49	S88°49'51"W	46.94
L50	N86°12'13"W	49.35
L51	N71°02'50"W	12.01
L52	N71°02'50"W	51.45
L53	N71°59'32"W	42.80
L54	N56°07'36"W	48.97
L55	N56°07'36"W	11.31
L56	N57°43'20"W	48.32

Line	Bearing	Distance
L57	N53°43'41"W	40.78
L58	N35°30'27"W	50.13
L59	N35°30'27"W	45.34
L60	N48°31'29"W	75.85
L61	N45°36'39"W	34.34
L62	N45°36'39"W	15.28
L63	N39°20'46"W	51.22
L64	N61°10'42"W	38.69
L65	N74°56'48"W	33.25
L66	N49°53'37"W	89.13
L67	S82°45'25"W	26.41
L68	N84°14'25"W	55.90
L69	N84°14'25"W	100.00
L70	N05°45'35"E	65.00
L71	N52°43'18"E	60.00
L72	S68°29'57"E	69.75
L73	N85°07'07"E	76.29
L74	N21°30'03"E	37.32
L75	S14°47'39"E	74.44

Curve	Radius	Delta	Length	Tangent	Chord Bear.	Chord Dist.
C1	430.00	01°56'57"	14.63	7.31	S38°15'10"E	14.63
C2	430.00	19°52'09"	149.12	75.31	S49°09'42"E	148.37
C3	430.00	08°24'10"	70.57	35.36	S63°47'52"E	70.49
C4	370.00	31°13'16"	201.62	103.38	S52°53'19"E	199.13
C5	50.00	81°30'45"	71.13	43.09	S37°52'29"W	65.28
C6	50.00	45°12'52"	39.46	20.82	S29°29'19"E	38.44
C7	50.00	64°58'26"	56.70	31.84	S84°34'58"E	53.71
C8	50.00	40°58'29"	35.76	18.68	N42°26'35"E	35.00
C9	50.00	53°35'05"	46.76	25.25	N04°50'12"W	45.08
C10	50.00	100°55'47"	88.08	60.58	S18°50'08"W	77.12
C11	50.00	42°12'01"	36.83	19.29	N89°35'57"W	36.00
C12	50.00	45°50'30"	40.00	21.14	N45°34'42"W	38.95
C13	50.00	97°17'16"	84.90	56.80	N25°59'13"E	75.06

NOTE:
LOT 131A IS NONCONFORMING AS A BUILDING LOT AND SHALL BE USED FOR OFFSITE NITRIFICATION LINES FOR THE CORRESPONDING NUMBERED WATERFRONT LOT.

NO.	DATE	DESCRIPTION	BY
1	04-27-98	ADDED OFFSITE NITRIFICATION LOT	TES



MINIMUM BUILDING SETBACK LINES:
FRONT-----50 FEET
SIDELINE-----15 FEET
SIDELINE ABUTTING STREET-----30 FEET
REAR-----50 FEET