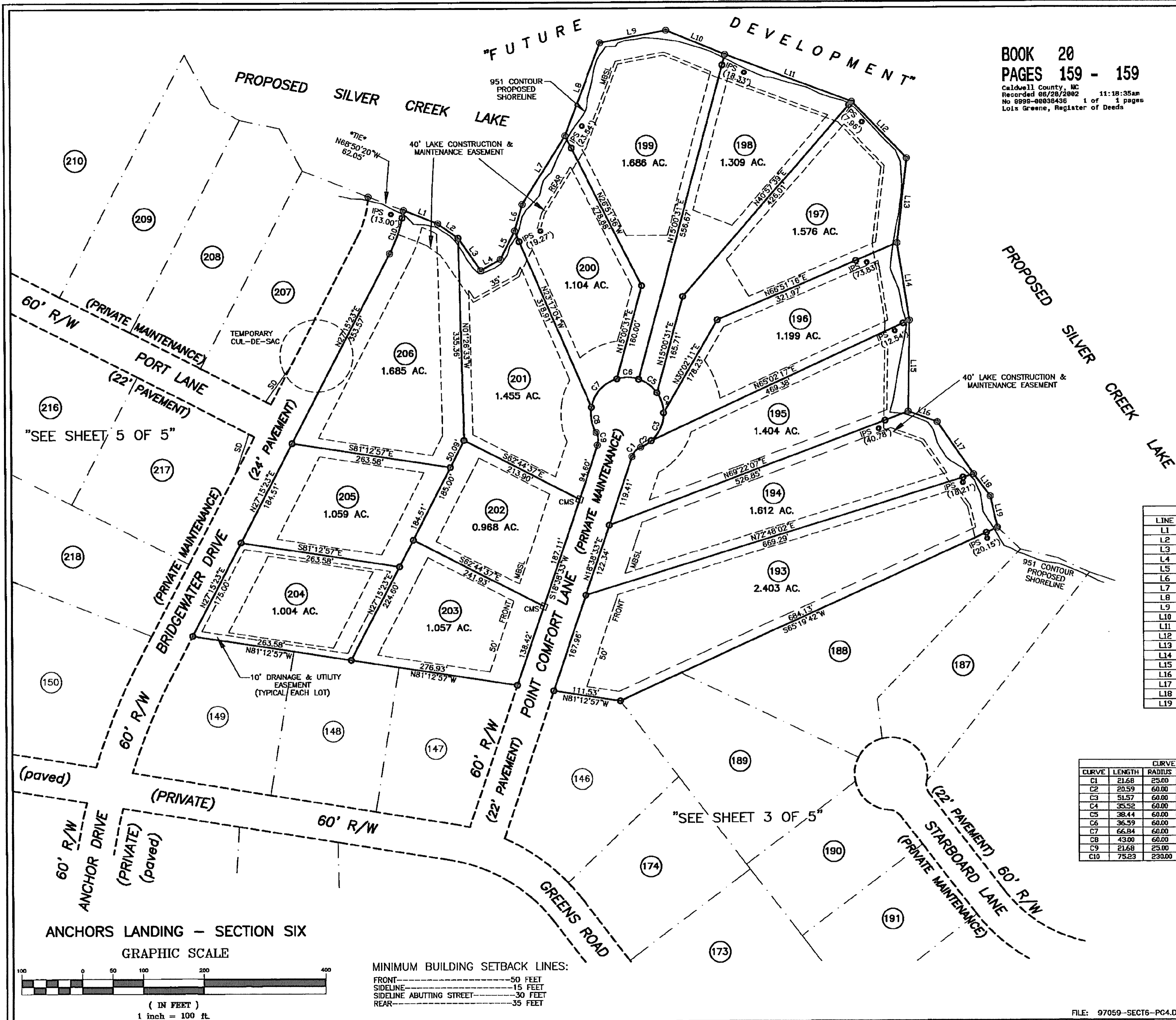
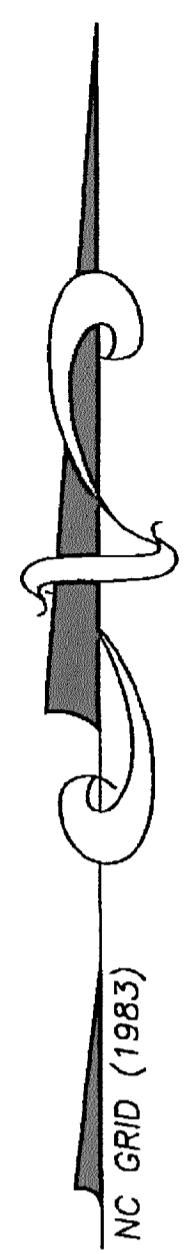
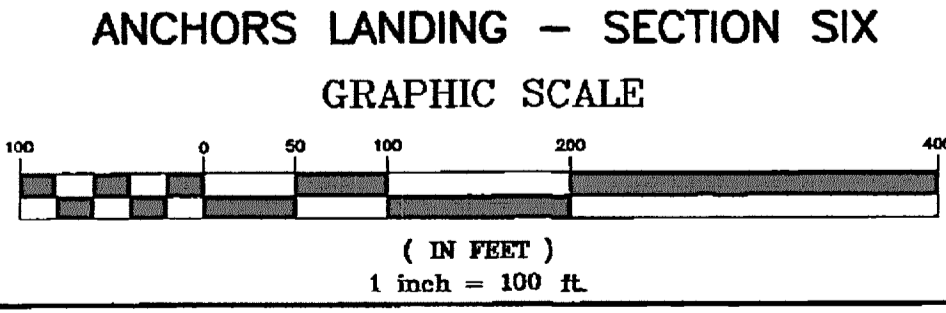


BOOK 20  
 PAGES 159 - 159  
 Caldwell County, NC  
 Recorded 08/23/2002 11:18:35am  
 No 8995-0808456 1 of 1 pages  
 Lois Greene, Register of Deeds



LINE	LENGTH	BEARING
L1	60.72	S68°22'10"E
L2	41.11	S54°50'32"E
L3	65.21	S34°41'23"E
L4	37.08	N60°32'39"E
L5	52.53	N26°29'10"E
L6	45.48	N16°08'26"E
L7	134.25	N32°06'02"E
L8	164.69	N20°49'19"E
L9	110.71	N79°29'33"E
L10	105.92	S67°25'46"E
L11	222.54	S69°16'42"E
L12	130.09	S43°40'58"E
L13	141.14	S06°35'44"W
L14	129.96	S08°48'25"E
L15	151.56	S00°58'00"W
L16	50.80	S70°06'40"E
L17	104.83	S34°31'35"E
L18	45.58	S36°34'14"E
L19	53.21	S12°41'40"E

CURVE	LENGTH	RADIUS	CHORD BEARING	DISTANCE
C1	21.68	25.00	S43°28'57"W	21.00
C2	20.59	60.00	N58°29'29"E	20.49
C3	51.57	60.00	N24°02'11"E	50.00
C4	35.52	60.00	N17°32'45"W	35.00
C5	38.44	60.00	N52°51'24"W	37.78
C6	36.39	60.00	N88°40'44"W	36.02
C7	66.84	60.00	S41°56'23"W	63.43
C8	43.00	60.00	S10°30'18"E	42.09
C9	21.68	25.00	N06°11'50"W	21.00
C10	75.23	230.00	N17°53'09"E	74.90



MINIMUM BUILDING SETBACK LINES:  
 FRONT-----50 FEET  
 SIDELINE-----15 FEET  
 SIDELINE ABUTTING STREET-----30 FEET  
 REAR-----35 FEET

REVISED: 12-19-01  
 REVISED: 08-28-01

**GVG & A**  
 GERALD V. GRANT  
 & ASSOCIATES  
 P.O. BOX 268  
 STATESVILLE, NC 28687  
 PHONE: (704) 872-3136

FILE: 97059-SECT6-PC4.DWC