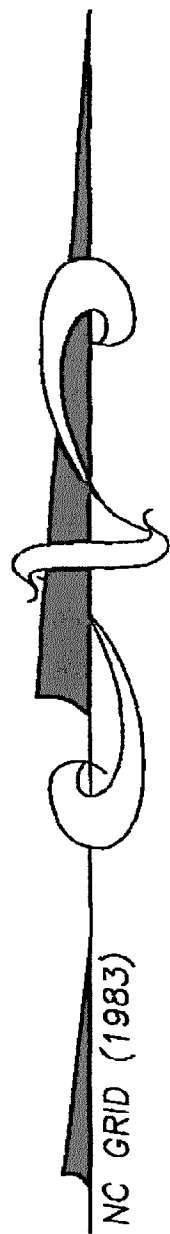


CURVE	LENGTH	RADIUS	CHORD BEARING	DISTANCE
C1	21.68	25.00	N87°35'01"W	21.00
C2	26.01	60.00	N79°59'46"E	25.81
C3	35.73	60.00	S70°31'31"E	35.20
C4	51.47	60.00	S28°53'24"E	49.91
C5	94.88	60.00	S40°59'10"W	85.30
C6	84.46	60.00	N53°23'19"W	77.65
C7	21.68	25.00	S37°54'14"E	21.00
C8	69.20	170.00	N15°35'48"E	68.73

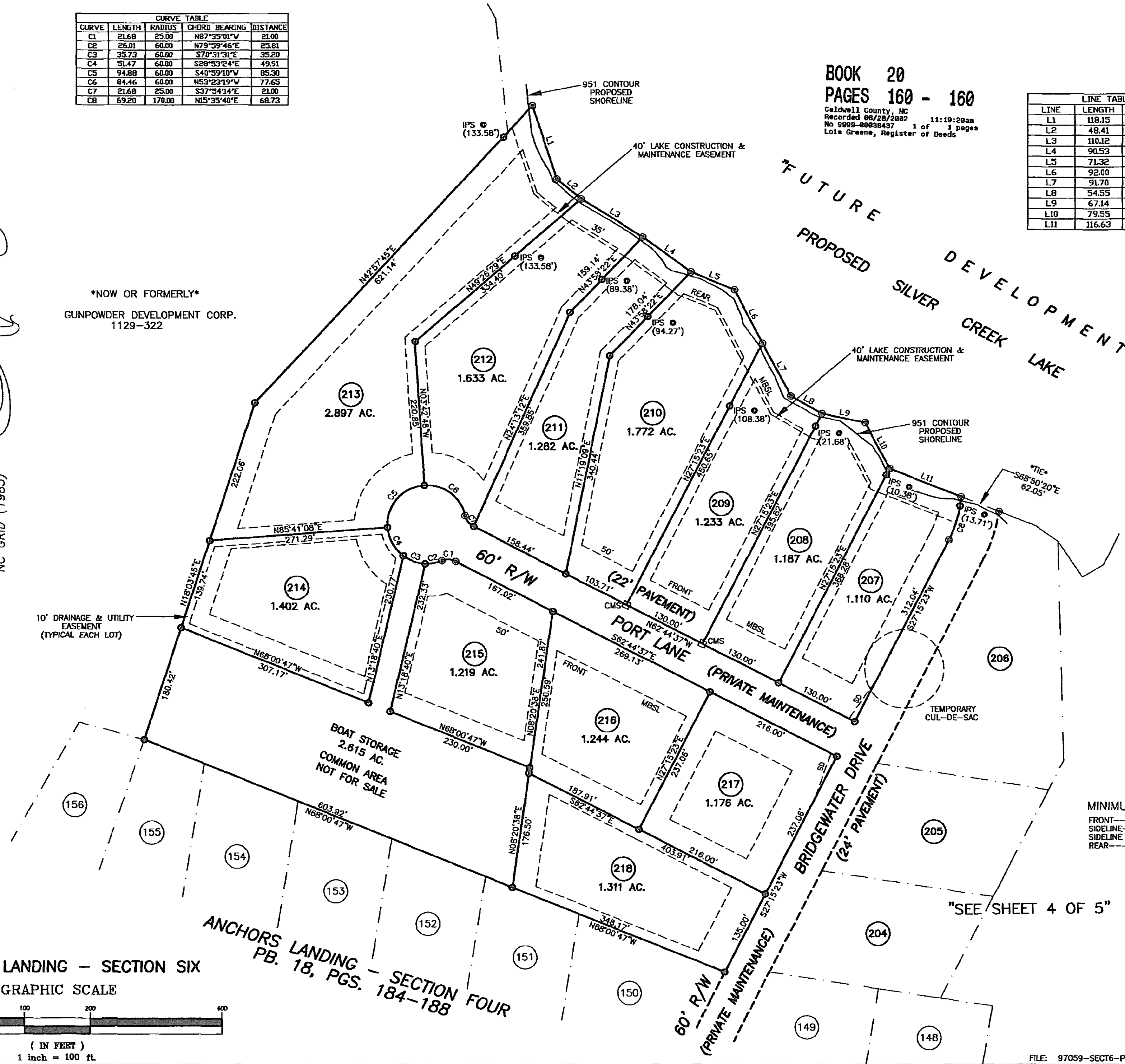
BOOK 20  
PAGES 160 - 160

Caldwell County, NC  
Recorded 06/28/2002  
No 0982-00035457 1 of 1 pages  
Lois Greene, Register of Deeds

LINE	LENGTH	BEARING
L1	118.15	S18°03'59"E
L2	48.41	S50°36'37"E
L3	110.12	S58°12'40"E
L4	90.53	S53°55'09"E
L5	71.32	S67°41'51"E
L6	92.00	S27°16'29"E
L7	91.70	S28°10'54"E
L8	54.55	S59°47'49"E
L9	67.14	S78°12'38"E
L10	79.55	S27°54'23"E
L11	116.63	S68°11'21"E



\*NOW OR FORMERLY\*  
GUNPOWDER DEVELOPMENT CORP.  
1129-322



MINIMUM BUILDING SETBACK LINES:  
FRONT-----50 FEET  
SIDELINE-----15 FEET  
SIDELINE ABUTTING STREET-----30 FEET  
REAR-----35 FEET

"SEE SHEET 4 OF 5"

ANCHORS LANDING - SECTION SIX  
GRAPHIC SCALE



( IN FEET )  
1 inch = 100 ft.

ANCHORS LANDING - SECTION FOUR  
PB. 18, PGS. 184-188

REVISED: 12-19-01  
REVISED: 08-28-01

**G & A**  
GERALD V. GRANT  
& ASSOCIATES  
P.O. BOX 268  
STATESVILLE, NC 28687  
PHONE: (704) 872-3136

FILE: 97059-SECT6-PG5.DWG

SHEET FIVE OF FIVE SHEETS