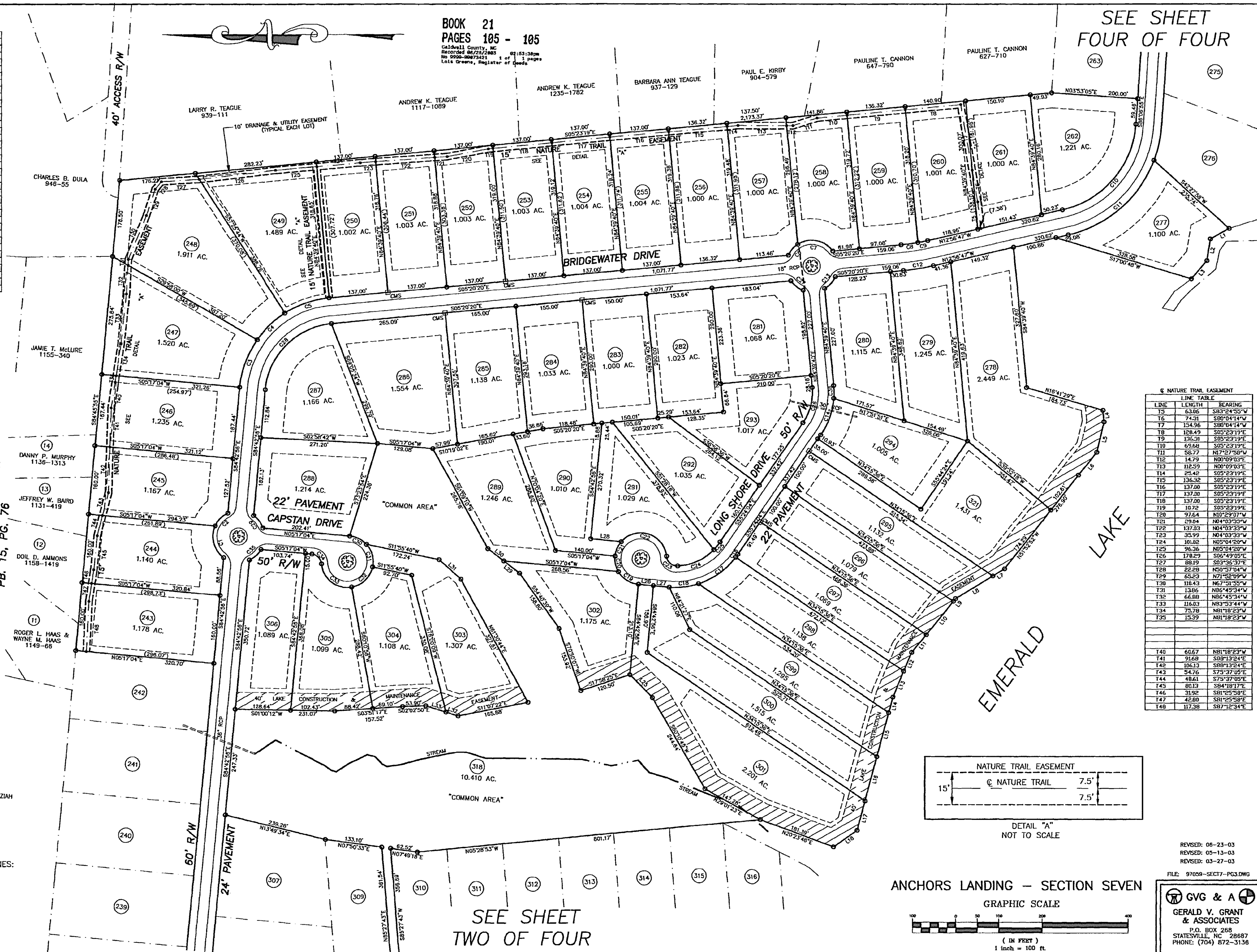


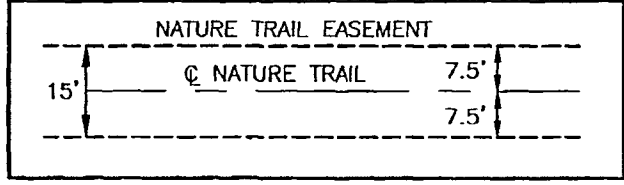
CURVE	LENGTH	RADIUS	CHORD BEARING	DISTANCE
C1	82.67	60.00	S74°45'21"W	76.28
C2	42.99	60.00	N45°14'39"W	42.08
C3	119.45	230.00	N69°50'16"W	118.11
C4	89.87	230.00	N43°42'56"W	89.30
C5	193.35	230.00	N18°57'18"W	188.29
C6	33.79	60.00	N49°12'13"W	33.35
C7	91.87	60.00	N18°47'47"E	83.16
C8	39.28	470.00	S07°44'00"E	39.27
C9	23.12	470.00	S12°32'13"E	23.12
C10	280.93	220.00	S49°31'31"E	262.24
C11	275.14	220.00	S41°05'48"E	264.20
C12	70.37	330.00	S09°08'33"E	70.32
C13	37.05	60.00	S47°39'04"E	36.46
C14	92.36	175.00	S70°31'16"E	91.30
C15	8.51	175.00	S54°47'18"E	8.51
C16	108.17	175.00	S33°41'17"E	106.43
C17	68.76	175.00	S06°43'31"E	68.32
C18	36.88	60.00	S32°26'31"W	34.77
C19	37.37	60.00	S77°26'31"W	36.77
C20	37.37	60.00	N64°52'22"W	36.77
C21	139.81	60.00	N17°43'23"E	110.26
C22	38.01	250.00	S40°55'31"W	34.45
C23	94.53	125.00	S24°14'54"E	92.11
C24	23.18	125.00	S51°10'18"E	23.15
C25	87.13	125.00	S75°22'12"E	85.39
C26	37.05	60.00	S36°58'24"W	36.46
C27	37.05	60.00	N45°01'38"W	36.46
C28	37.05	60.00	N52°58'20"E	36.46
C29	44.63	60.00	N66°36'11"E	43.63
C30	56.56	60.00	N74°55'29"W	54.48
C31	71.48	60.00	S43°56'41"E	67.32
C32	99.42	60.00	S37°39'06"W	88.43
C33	34.83	250.00	N45°12'08"E	32.08
C34	37.05	60.00	N45°24'12"E	36.46
C35	29.62	175.00	N89°30'36"E	29.58

LINE	LENGTH	BEARING
L1	49.15	N29°23'08"W
L2	51.37	N80°47'35"W
L3	23.60	N49°28'13"W
L4	27.23	N84°10'42"E
L5	73.09	S76°54'04"E
L6	68.23	S51°06'31"E
L7	22.62	S31°33'25"E
L8	100.78	S31°33'25"E
L9	8.89	S51°02'34"E
L10	180.24	S51°02'34"E
L11	52.54	S51°02'34"E
L12	47.59	S67°12'12"E
L13	65.66	S67°12'12"E
L14	37.79	N75°06'54"W
L15	106.60	N75°06'54"W
L16	106.60	N75°06'54"W
L17	71.85	S75°06'54"E
L18	66.66	S35°11'45"E
L19	74.86	S45°04'32"W
L20	35.00	N05°17'04"E
L21	37.03	N05°17'04"E
L22	71.52	S09°17'04"W
L23	44.76	S37°36'04"E
L24	46.76	N37°36'04"E
L25	68.10	N41°54'07"E
L26	29.41	N17°47'06"E
L27	49.38	N17°47'06"E

LINE	LENGTH	BEARING
T1	63.06	S83°24'25"W
T2	74.31	S80°04'14"W
T3	154.96	S80°04'14"W
T4	108.49	S05°23'19"E
T5	136.41	S05°23'19"E
T6	69.68	S05°23'19"E
T7	58.77	N17°27'58"W
T8	14.79	N09°09'03"E
T9	112.25	N09°09'03"E
T10	25.48	S05°23'19"E
T11	136.32	S05°23'19"E
T12	137.00	S05°23'19"E
T13	137.00	S05°23'19"E
T14	107.2	S05°23'19"E
T15	91.64	N10°23'03"W
T16	29.04	N04°03'33"W
T17	137.03	N04°03'33"W
T18	35.99	N04°03'33"W
T19	100.02	N50°02'00"W
T20	96.36	N05°04'20"W
T21	178.29	S06°49'05"E
T22	88.19	S05°23'19"E
T23	22.28	N50°57'04"W
T24	62.23	N71°52'09"W
T25	118.43	N67°21'35"W
T26	133.06	N84°43'34"W
T27	66.88	N86°43'34"W
T28	116.03	N93°53'44"W
T29	75.78	N81°18'22"W
T30	15.39	N81°18'22"W
T31	60.67	N81°18'22"W
T32	91.68	S08°13'24"E
T33	106.13	S08°13'24"E
T34	54.76	S73°17'05"E
T35	48.61	S75°37'05"E
T36	88.13	S84°18'17"E
T37	31.92	S81°25'38"E
T38	42.80	S81°25'38"E
T39	117.38	S87°12'34"E

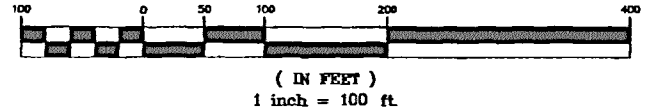


MINIMUM BUILDING SETBACK LINES:
FRONT - 50 FEET
SIDELINE - 15 FEET
SIDELINE ABUTTING STREET - 30 FEET
REAR - 35 FEET
REAR ABUTTING LAKE - 50 FEET



DETAIL "A"
NOT TO SCALE

ANCHORS LANDING - SECTION SEVEN
GRAPHIC SCALE



REVISED: 06-23-03
REVISED: 05-13-03
REVISED: 03-27-03

FILE: 97058-SECT7-PC3.DWG

GERALD V. GRANT & ASSOCIATES
 P.O. BOX 268
 STATESVILLE, NC 28687
 PHONE: (704) 872-3136

SEE SHEET
TWO OF FOUR