

17-267

FUTURE DEVELOPMENT

NO.	DATE	DESCRIPTION	BY
1	08-10-98	ADDED OFFSITE LOTS	TES
2	10-05-98	ADDED OFFSITE NOTES	TES

NOTE:
 LOTS 5A, 16A, 17A, 18A, 19A, 21A, 33A, AND 35A ARE NONCONFORMING AS BUILDING LOTS AND SHALL BE USED FOR OFFSITE NITRIFICATION LINES FOR THE CORRESPONDING NUMBERED WATERFRONT LOTS.

CURVE TABLE					
CURVE	Radius	Length	Tangent	Chord Bear.	Chord Dist.
C1	260.00	76.66	38.61	N79°43'23"E	76.38
C2	260.00	110.08	55.87	N59°08'52"E	109.26
C3	260.00	36.83	18.44	N42°57'41"E	36.80
C4	260.00	36.83	18.44	N34°50'45"E	36.80
C5	260.00	79.92	40.28	N21°58'56"E	79.60
C6	260.00	136.41	69.81	N01°51'12"W	134.85
C7	270.00	59.90	30.07	S74°25'55"E	59.78
C8	270.00	46.32	23.22	S54°04'39"E	46.26
C9	270.00	56.01	28.10	S43°13'13"E	55.90
C10	330.00	250.60	131.69	N59°01'58"W	244.62
C11	270.00	42.81	21.45	S63°32'03"E	42.76
C12	200.00	73.29	37.06	S09°50'21"W	72.88
C13	200.00	218.98	121.92	S51°42'11"W	208.20
C14	200.00	102.22	52.25	N79°17'11"W	101.11

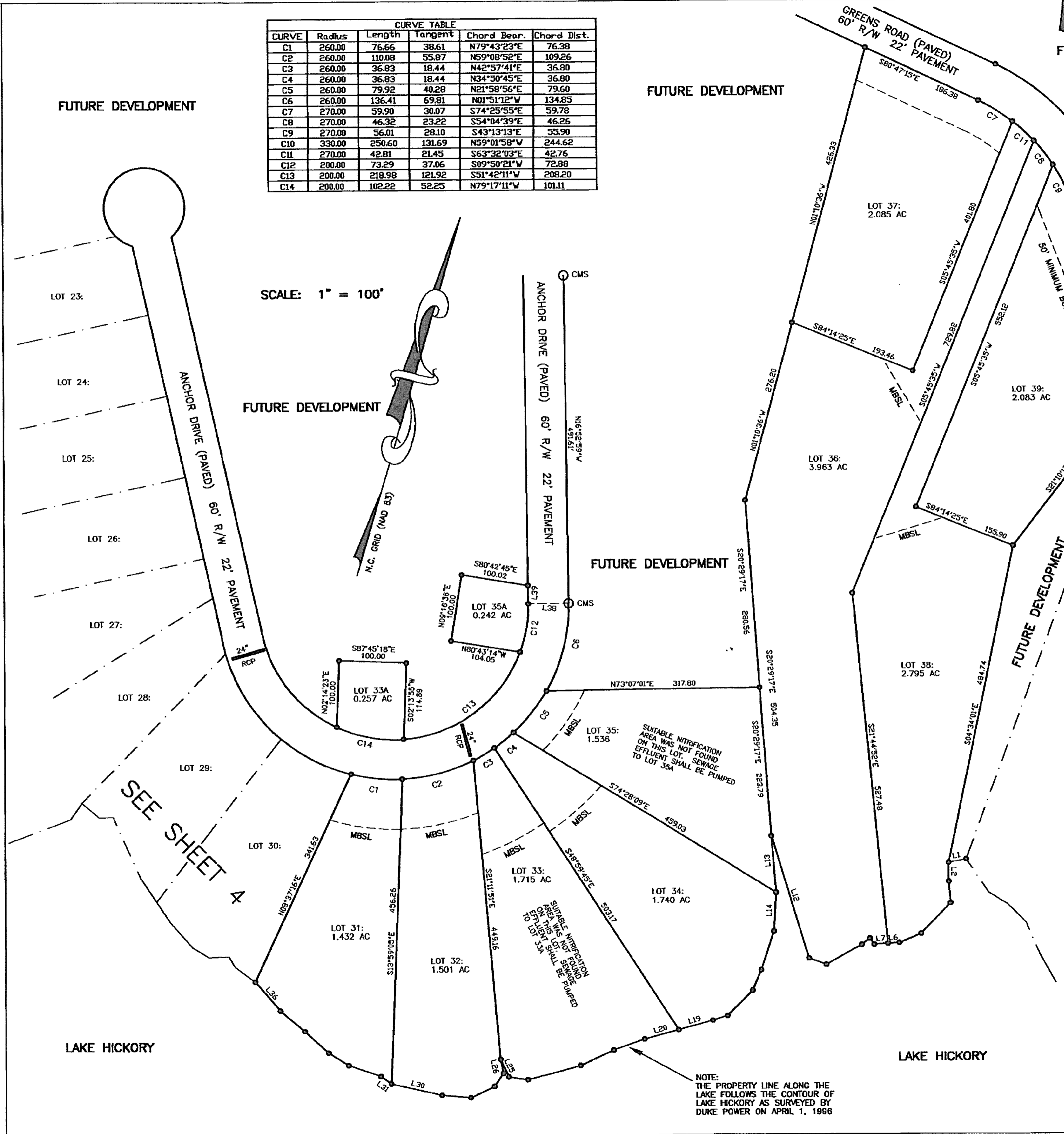
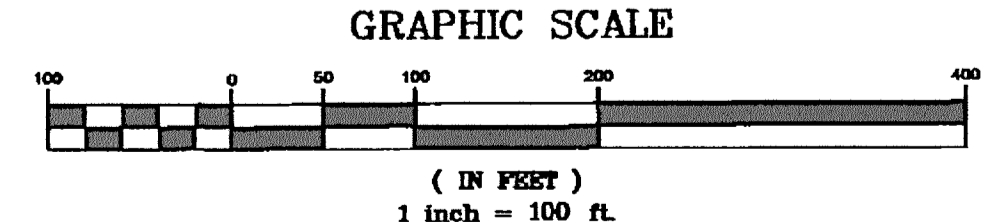
SCALE: 1" = 100'

LINE TABLE		
LINE	Bearing	Distance
L1	N62°45'25"E	26.41
L2	S16°15'19"E	28.09
L3	S20°55'55"E	31.85
L4	S27°47'02"W	63.48
L5	S50°58'26"W	34.88
L6	S69°49'59"W	17.18
L7	S69°49'59"W	20.54
L8	N51°39'36"W	11.11
L9	S35°37'30"W	14.95
L10	S44°29'22"W	60.71
L11	N86°45'29"W	27.62
L12	N33°02'43"W	191.21
L13	S20°43'36"E	84.87
L14	S12°56'19"E	57.86
L15	S02°01'55"W	60.92
L16	S07°13'25"W	33.30
L17	S28°49'12"W	53.09
L18	S55°59'38"W	23.14
L19	S58°38'16"W	53.17
L20	S58°38'16"W	52.36
L21	S34°39'14"W	48.81
L22	S48°42'48"W	54.63
L23	S58°35'26"W	80.79
L24	S82°36'54"W	28.78
L25	N41°35'11"W	29.11
L26	S27°48'28"E	21.51
L27	S18°04'24"W	23.71
L28	S48°31'59"W	39.09
L29	S78°51'14"W	43.04
L30	S86°52'05"W	77.21
L31	N69°34'43"W	19.18
L32	N87°16'53"W	50.52
L33	N73°48'58"W	35.41
L34	N63°41'59"W	47.67
L35	N65°34'11"W	47.78
L36	N56°42'14"W	57.36
L37	N52°43'19"E	60.00
L38	S89°20'30"W	60.00
L39	S00°39'29"E	27.53

DEPARTMENT OF TRANSPORTATION
 DIVISION OF HIGHWAYS
 SUBDIVISION ROAD CONSTRUCTION STANDARDS CERTIFICATION

APPROVED: Martin Z. Bulbit
 DISTRICT ENGINEER

DATE: 10-6-98



NOTE:
 THE PROPERTY LINE ALONG THE LAKE FOLLOWS THE CONTOUR OF LAKE HICKORY AS SURVEYED BY DUKE POWER ON APRIL 1, 1986